

The idea of stewardship loggers is not new. The “woodcutter,” through folklore and history, has been portrayed as the steward of the forest. Today, the perception is different, but the logger is still the key player with respect to forest stewardship. It is the intent of this educational program to revitalize this stewardship ethic, and at the same time encourage the professional growth of loggers by empowerment through education.



“Accredited Logging Professionals are individuals, actively engaged in Montana’s Logging Industry, who have demonstrated through the completion of an educational curriculum, commitment towards professional standards which distinguish them

Elements of Accreditation:

How Logging Professionals achieve initial Accredited status

1. Successful completion of the Montana Forest Stewardship Workshop for Loggers.

This 40-hour curriculum, developed by Montana State University Extension Forestry, teaches forest resource inventory and planning. It includes both classroom and outdoor activities. Participants must develop a Stewardship Plan for a forest, that includes consideration for wildlife, water, timber, range, recreation, and aesthetic resources.

2. Develop a work safety Loss Control Manual.

This involves developing a dynamic written safety program for logger employees and ensuring that all employees are certified in First Aid and CPR. This is accomplished with assistance from Montana Logging Association safety personnel.

3. Participate in a Demonstration Field Audit (new 1996 standard)

Field Audits are designed to provide decision-making skills that use Best Management Practices to avoid resource degradation.

4. Comply with Insurance and Workers Compensation requirements.

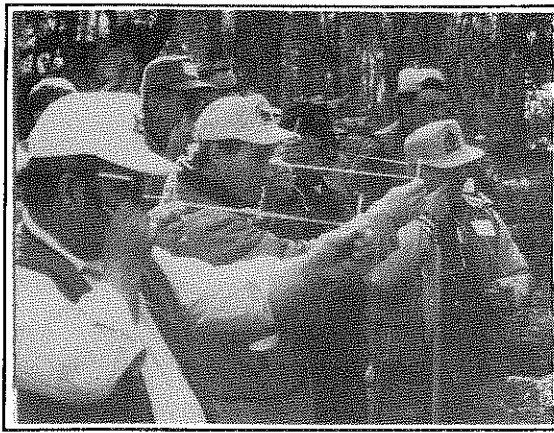
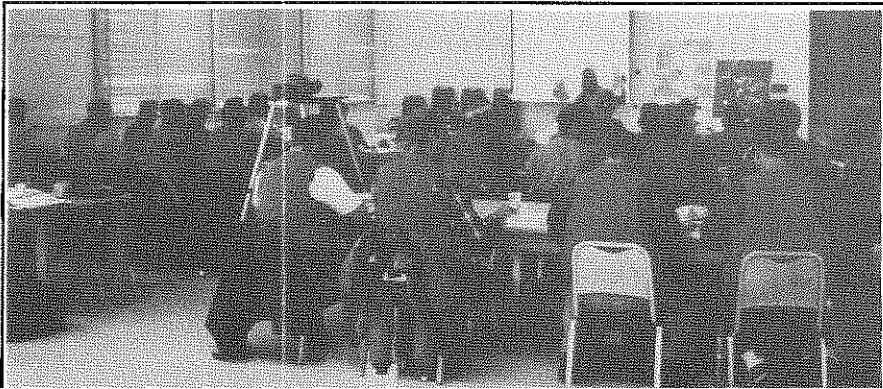
All documents will be kept on file in the Accredited Logging Professionals data base.

RETENTION OF ACCREDITED STATUS

Each year after initial accreditation Accredited Logging Professionals must complete a minimum of 32 hours of approved continuing education in the fields of:

Forest Stewardship, Safety, and Operational Sustainability.

These requirements will be facilitated by the Montana Logging Association to provide a choice of subjects for the Logger to study. To ensure a broad-based education, the Logger will be required to allocate minimum hours to the three different disciplines: 16 hours in Forest Stewardship, and 8 hours each in the other two.



“Why bother with Logger Accreditation?”

Montana Loggers have expressed the desire to show that they are interested in empowering themselves with a deeper knowledge of their profession, and its role in Natural Resource Management.

It makes sense to do this in a forum that encourages professional growth and knowledge, rather than in a forum that demands compliance with minimum standards of operation.

“ How is the Accredited Logging Professional program funded?”

The administrative costs are funded by the Montana Logging Association and the Forest Products Industry. The educational classes are funded by the attendees on a “pay as you learn” basis. A scholarship fund will be set up to help Loggers attend the classes.

“Who designs the educational classes?”

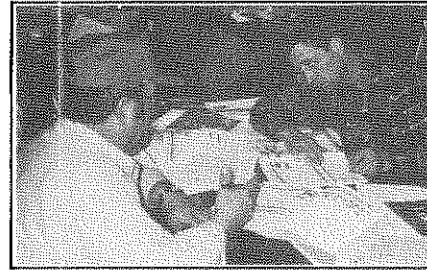
The Forest Stewardship Workshop for Loggers was designed by Montana State

University Extension Forestry Service. A continuing education workshop entitled: **Principles of Selection Forestry for Harvesting Professionals** was designed by MSU Extension Forestry. The Demonstration Field Audits are collaboratively developed by the Montana Logging Association and the Montana Department of State Lands. The **Safety** classes are developed by the Montana Logging Association. Other classes will be developed during 1995 and into the future to ensure a broad-based and current education for the Accredited Logging Professionals.

**Please Call the MLA at:
752-3168
for more information**

“What do people think so far?”

“As a group, loggers exert considerable influence on Montana’s forests. Their services are very



visible and have long-term impact on water quality, wildlife, biodiversity, and rural aesthetics. As a result, I commend the logging profession for its

effort to establish a Logger Accreditation Program in Montana.”

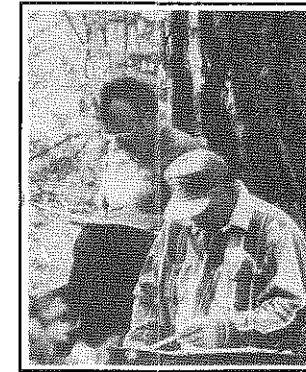
Governor Marc Racicot

“I wanted to be as informed as the hundreds of landowners who have graduated from the Stewardship Workshop. This is a great start to an accreditation program for loggers.”

Floyd Quiram, Quiram Logging Co.

“I attended the stewardship workshop in White Sulphur Springs, spring 1993. It changed the way I think about forest land.”

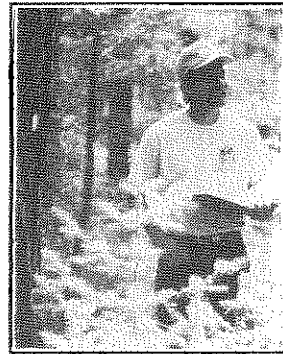
Howard Dixon, Dixon and Dixon, Inc.



“I’m a professional logger and graduate forester. I learned a lot about stewardship at the Yellow Bay workshop, I recommend it.”

Brent Anderson, Conifer Logging Co.

“It is very inspiring to work with people who are willing to face changes in a positive, pro-active way. I feel that way about the



loggers who participate in, and help develop the MLA accreditation program. By changing themselves through education, and choosing to improve their quality of service, they are offering positive solutions for themselves and for Montana’s future.”

Jane Sullivan, Balanced Resource Management Co.

